

FIG 1a - Praha / N-20U=mm

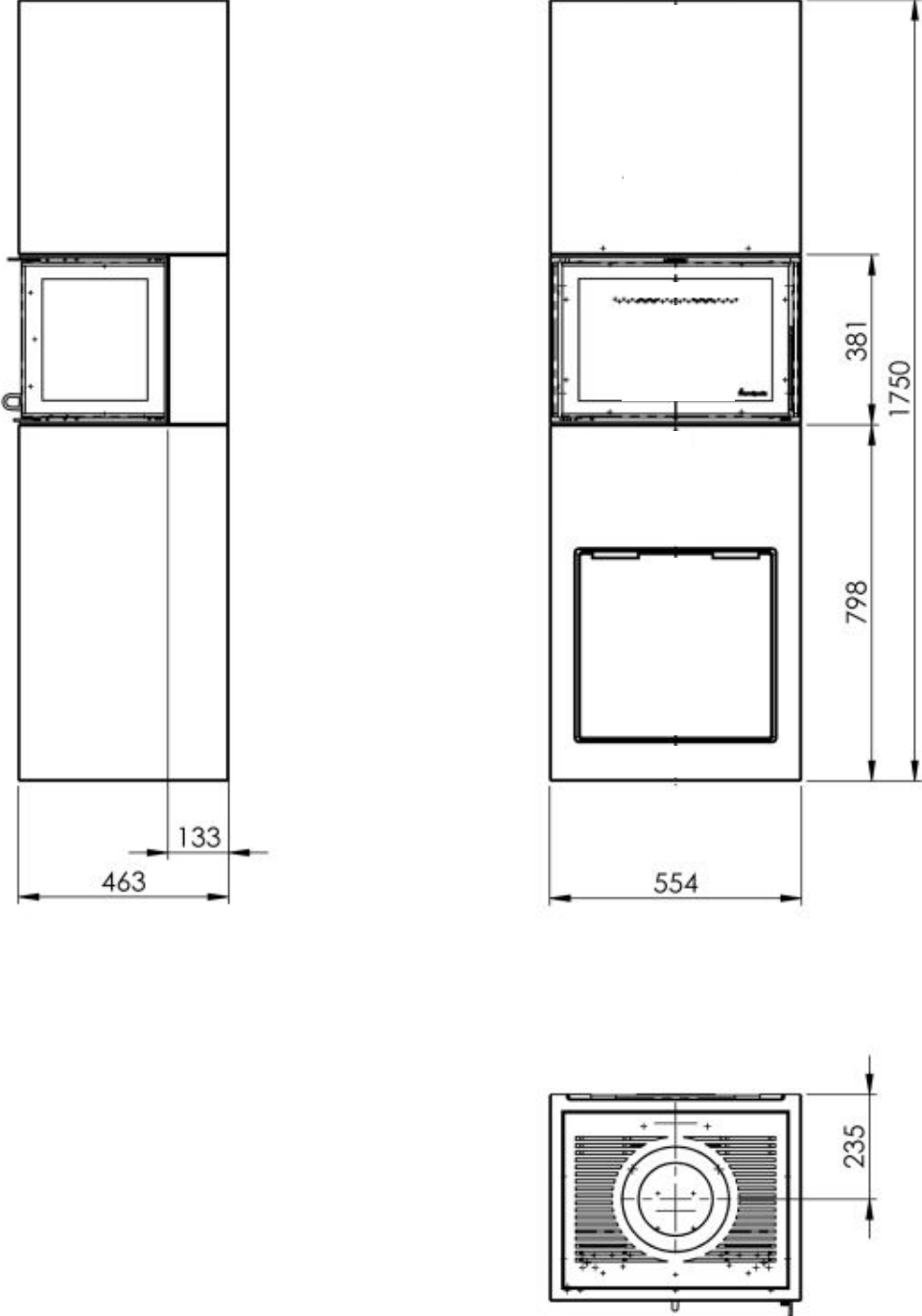


FIG 1b - Praha high / N-20U=mm

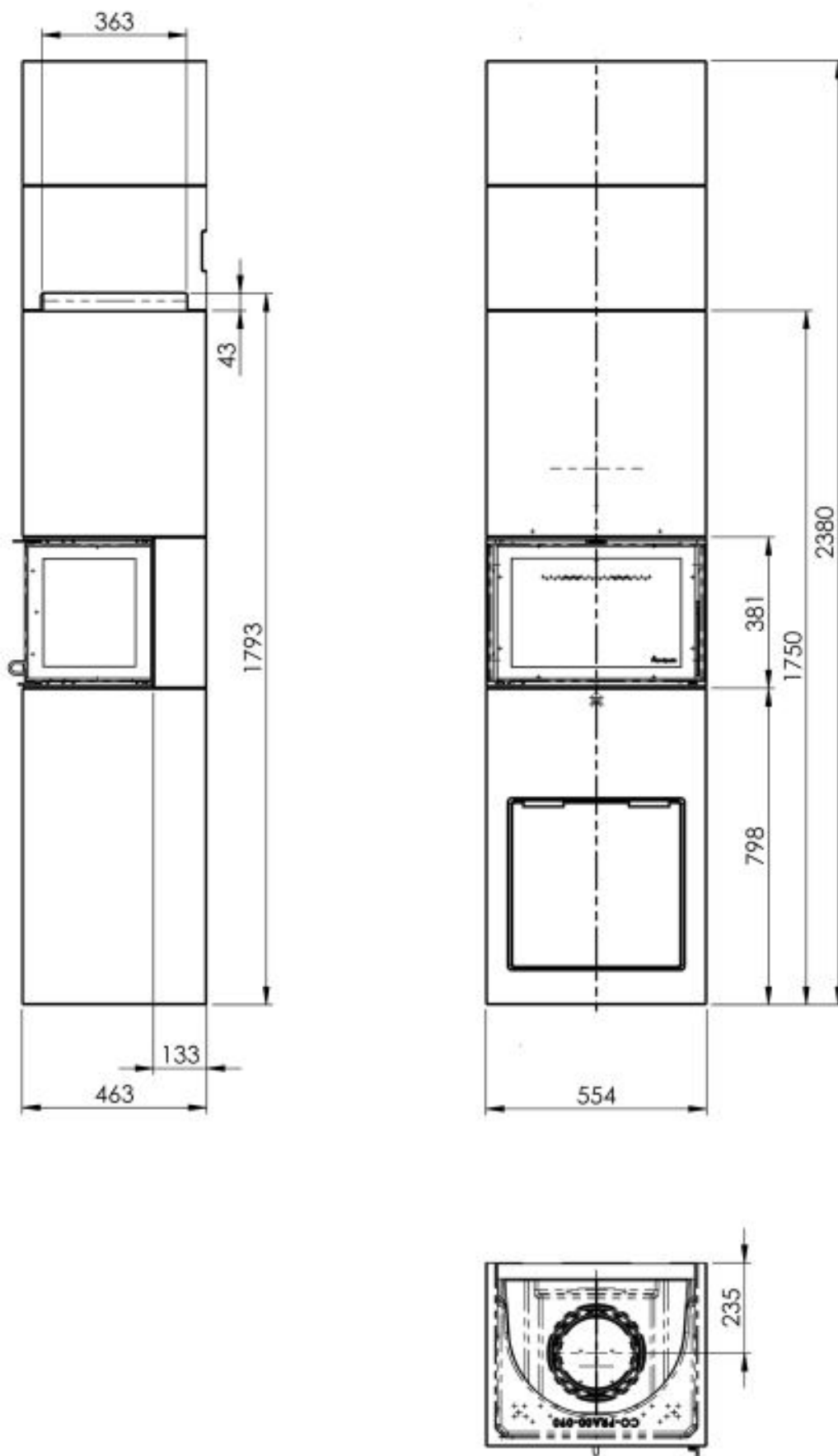


FIG 1B

Praha ; Praha high / N-20U = Air / Chimney connection = mm

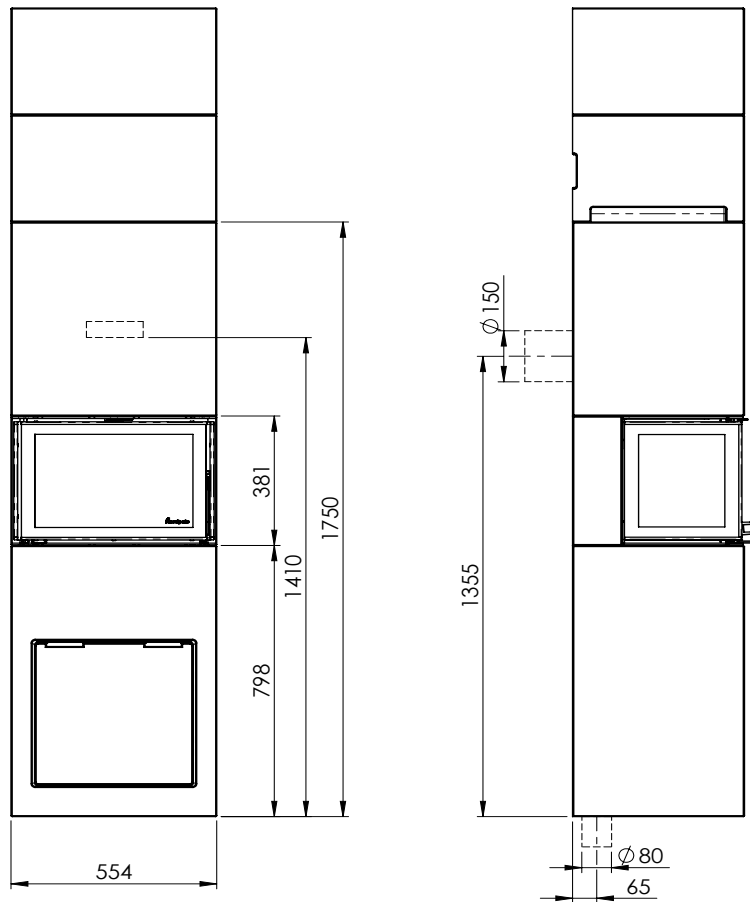
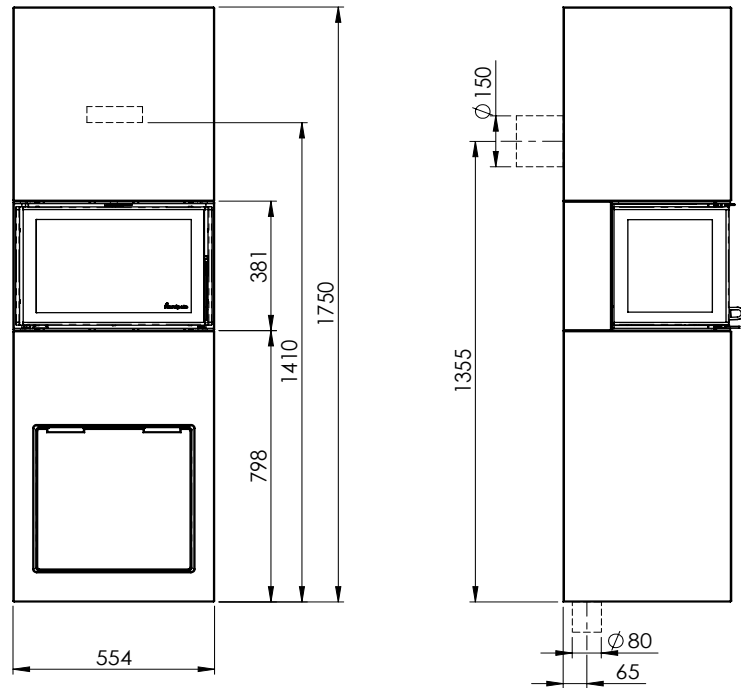

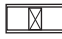


FIG 2

Praha/ N-20U

 =Firewall/ Hitzenschutzwand / Mur parfeu / Parete non combustibile

 =Combustible material / Brennbares Material / Matières combustibles/ Parete combustibile

